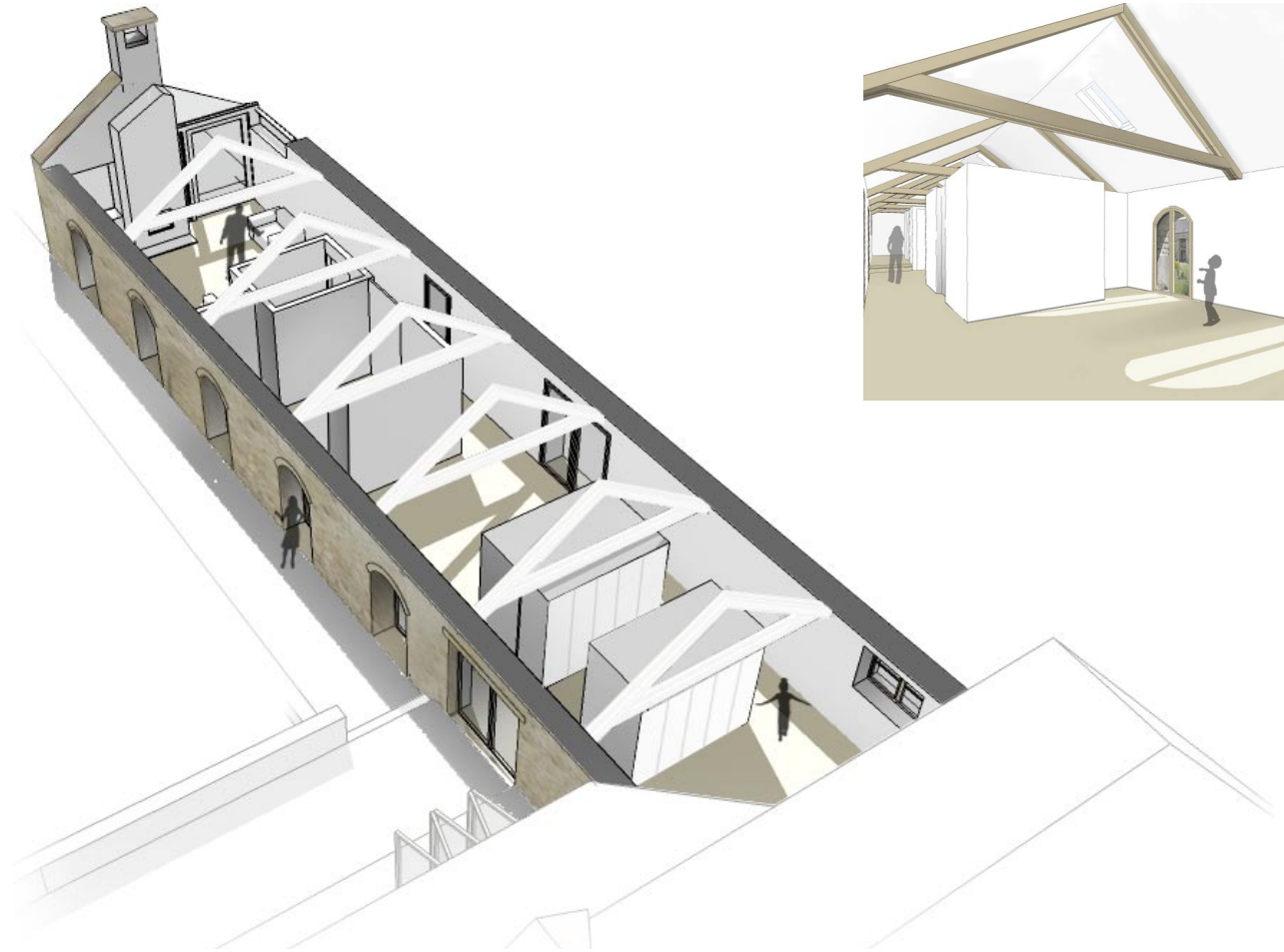


## Priestbarrow

The existing house was converted in the mid-90s from a collection of individual stone farm buildings arranged in a horse-shoe plan. The client required the adaptation of the remaining redundant cowshed into additional accommodation.

The design of the new conversion revolves around the desire to retain the essence of a single volume. The bathroom, utility and plant areas are contained within free-standing structures arranged to define the primary living spaces. Concealed oak sliding doors subdivide the volume when greater privacy is required. A new ground source heat pump, solar panels and thermal store are to replace an oil fired system for heating and hot water provision



*Location: Priston, Bath*

*Client: Private*

*Status: Planning Consent 2008*